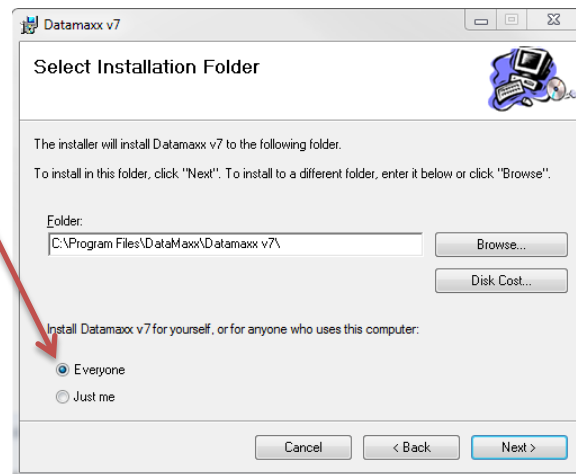




1. Run the setup.ex
2. Choose Next then choose to install for everyone



3. Choose Next to complete Install
4. Place the DM.dms, DM.dmc and dmd.udl in the program installation folder (default is c:\program files\datamaxx\datamaxx v7). Users will only need read and write access. These will be provided to you by your Datamaxx tech support representative.
5. Run the newly installed program. You will then be prompted to connect to the three files.
6. The first time that you open the program for each user you will have to connect to these three files.